

# COVIDSAFE



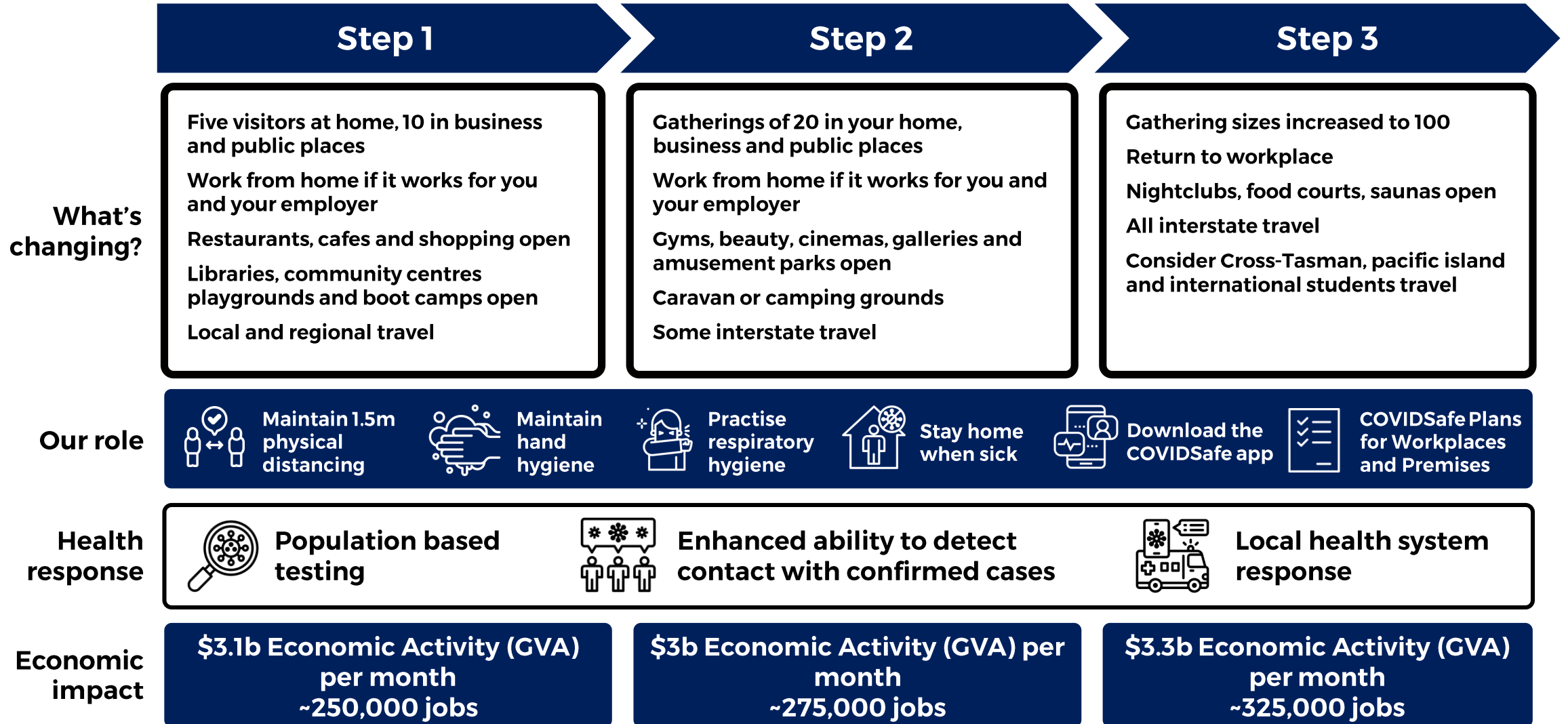
## **Roadmap to a COVIDSafe Australia**

A three-step pathway for easing restrictions

# Roadmap to a COVIDSafe Australia

COVIDSAFE

States and territories will move at different times based on local conditions



# Roadmap to a COVIDSafe Australia

COVIDSAFE

States and territories will move at different times based on local conditions

National Cabinet will review step progress every three weeks

## Step 1

**COVID safe reopening commences with physical distancing & hygiene**

- Up to 5 visitors to your home
- Gatherings of up to 10 outside of home
- Work from home if it works for you and your employer
- Libraries, community centres playgrounds and boot camps open
- Australians can do more:
  - Shopping
  - Restaurants and cafés
  - Home sales & auctions
  - Local playgrounds
  - Outdoors boot camps
  - Local and regional travel

## Step 2

**Most business reopen with physical distancing & hygiene**

- Gatherings of up to 20 outside of home
- Work from home if it works for you and your employer
- Australians can do even more in gatherings of up to 20:
  - Gyms
  - Beauty therapists
  - Cinemas, theatres or amusement parks
  - Galleries and museums
  - Some interstate travel
- States and territories may allow larger numbers in some circumstances

## Step 3

**All Australians return to work with physical distancing & hygiene**

- Gatherings up to 100
- Return to workplace
- Consider cross-Tasman, Pacific Island travel and international student travel
- Australians can do even more in gatherings of up to 100:
  - Food courts
  - Saunas and bathhouses
  - All interstate travel
- States and territories may allow larger numbers in some circumstances

# What Australians can do to make this a success

COVIDSAFE

## Personal responsibilities



Maintain  
1.5m physical  
distancing



Maintain  
hand  
hygiene



Practise  
respiratory  
hygiene



Stay home  
when sick



Download the  
COVIDSafe app

## Health foundations



Population  
based testing



Enhanced ability to detect  
contact with confirmed cases



Local health  
system response

## Protect vulnerable people



Vulnerable people should continue to stay home where possible

Restricted travel to remote and Aboriginal and Torres Strait Island communities

Aged Care restrictions balanced with need for family and social contact